



DR. DAN BILLS, D.M.D., M.S.

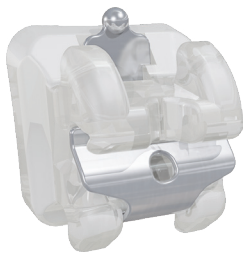
Dr. Dan Bills is an avid (yet barely competent) golfer, an amateur BBQ aficionado and a loving husband and father to his wife Emily and his daughter Caroline. Dr. Bills received his Bachelor of Arts degree in Biology from Lafayette College and his dental degree from Harvard University, both with Honors, after which he completed a three-year orthodontic residency at the University of Illinois. He is a Board Certified Diplomate of the American Board of Orthodontics and a Fellow of the American College of Dentists. He maintains a state-of-the-art private practice, Innovative Orthodontics, with three locations in Southern New Jersey, just outside of Philadelphia. He is a Clinical Associate in the University of Pennsylvania Department of Orthodontics and is on staff in the Department of Dentistry at Virtua Hospital, and he has been honored as "Teacher of the Year" at both of these prestigious institutions. He lectures regularly at orthodontic meetings, both stateside and abroad, and gives in-office courses about a variety of clinical topics as well as how to better utilize technology in the orthodontic office.

AREAS OF INTEREST: SELF LIGATION | DUAL ACTIVATION | EMPOWER: PRACTICE MARKETING

Empower² Self Ligating

Empower is the industry's most complete self ligating bracket system, bringing you choice like you've never had before. This unprecedented array of possibilities inspires you to treat patients your way. Empower puts control back in your hands.

- Unique design options allow you to adapt your treatment philosophies to meet your patients' needs
- Low profile, patient-friendly hooks (optional)
- Empower Clear - Reliable bond strength of proven Quad Matte™ base exclusive to American Orthodontics
- Empower 2 Metal - Micro-etched Maximum Retention™ pad with photo-etched pockets beneath 80 gauge mesh increases mechanical lock and ensures safe, secure bonds



Empower[®] Clear Self Ligating

Clear bracket combines performance with patient-pleasing aesthetics

- Durable, aesthetically plated clip
- Individual color coding and Visual Positioning Aids
- Chamfered slot entrances to reduce wire binding
- Reliable bond strength of proven Quad Matte™ base exclusive to AO



Empower² Self Ligating

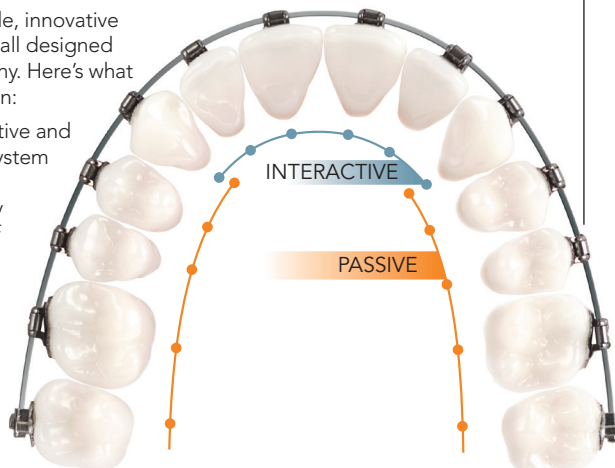
Metal brackets offer fully interactive, fully passive, or combination Dual Activation™ options

- Precision heat treated chromium cobalt clip
- Micro-etched bonding bases for secure bond strength
- Extended tie wings provide easy tie-ability and allow differential tying

Empower SL DUAL Activation™ SYSTEM

The Dual Activation System is a single, innovative concept with multiple applications - all designed to enhance your treatment philosophy. Here's what you'll experience with Dual Activation:

- The best of both worlds - interactive and passive brackets in one unified system
- Excellent anterior control
- Improved posterior freedom play
- Time saving benefits and ease of self ligation

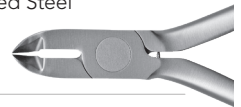


PERIPHERALS

SUSHI PLIERS 001-017403

Ceramic Bracket Debonding

- High quality American Forged Steel
- Contemporary, sleek design
- Patented Two-tone finish



EMPOWER INSTRUMENT 678-901C

Opening Instrument

- Single prong tip for opening using gingival tail of clip
- Double prong tip for opening using facial hole or for pressing wire into bottom of slot during clip closing



MR1 BANDS 505-000/515-000

Maximum Retention Bands

- Photo etched material
- Bright mirror finish
- Reduced interproximal heights



TANZO WIRE

Copper Nickel Titanium Wire

- Polished surface finish
- Preinstalled stops - optional
- High resiliency to deformation
- Quality ensured



TANZO

ELASTOMERICS

Wildlife Elastics

- Top quality latex tubing
- Precision cutting ensures consistent pulling forces
- Latex, Non Latex, and Neon options



DR. BILLS' RECOMMENDED EMPOWER DUAL ACTIVATION PRESCRIPTION



Empower²
Self Ligating

						.022		
Maxillary	Torq	Ang	Rot	M-D	R/L	Interactive	Passive	
Central	+12	+5		Empower SL		R L	485-1112 485-2112	
Lateral	+8	+9		Empower SL		R L	485-128 485-228	
Cuspid	0	+8		Empower SL <i>With Hook</i>		R L	485-130B 485-230B	
1st Bicuspid	-7	0		Empower SL - Bx Pad <i>With Hook</i>		R L		585-22-91407HD 585-22-92407HD
2nd Bicuspid	-7	0		Empower SL - Bx Pad		R L		585-22-91407 585-22-92407
1st Molar	-18	0	10	ifit Direct Bond Tube Non-Convertible, <i>With Hook</i>	4.5 mm	R L		1957-22-000047HM 1958-22-000048HM
2nd Molar	-25	0	0	Direct Bond, Single Non-Convertible, <i>With Hook</i>	2 mm	R L		097-761C 097-760C
Mandibular								
Anteriors	-6	0		Empower SL		R L	485-4106 485-3106	
Cuspid	0	+3		Empower SL <i>With Hook</i>		R L	485-430B 485-330B	
1st Bicuspid	-17	0		Empower SL - Bx Pad <i>With Hook</i>		R L		585-22-94417HD 585-22-93417HD
2nd Bicuspid	-17	+2		Empower SL - Bx Pad <i>With Hook</i>		R L		585-22-94517HD 585-22-93517HD
1st Molar	-20	0	0	ifit Direct Bond Tube Non-Convertible, <i>With Hook</i>	4.5 mm	R L		1955-22-000027HM 1956-22-000028HM
2nd Molar	-25	0	0	Direct Bond, Single Non-Convertible, <i>With Hook</i>	2 mm	R L		097-760C 097-761C



Empower
Clear Self Ligating

						.022	
Maxillary	Torq	Ang			R/L	Interactive	Passive
Central	+12	+5		Empower Clear	R L	1485-22-1112 1485-22-2112	
Lateral	+8	+9		Empower Clear	R L	1485-22-128 1485-22-228	
Cuspid	0	+8		Empower Clear <i>With Hook</i>	R L	1485-22-130HD 1485-22-230HD	
1st Bicuspid	-7	0		Empower Clear <i>With Hook</i>	R L		1585-22-1407HD 1585-22-2407HD
2nd Bicuspid	-7	0		Empower Clear	R L		1585-22-1407 1585-22-2407



The Next Generation of Buccal Tubes

American Orthodontics' dedication to innovation has led to the development of ifit - the ultimate combination of functionality, convenience, and patient comfort. ifit features a near horizontal hook orientation, enhanced bond strength and fit, and an ultra low profile.



Innovative hook orientation



Enhanced bonding and fit



Centered funnel entrance



Placement line
and positioning guides



Distal Extension on
parts with rotation



3524 Washington Avenue • Sheboygan, WI USA 53081 • +1 920 457 5051 • www.americanortho.com