



DR. TROY CHRISTENSEN, D.D.S., M.S.

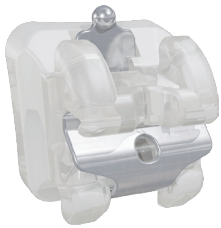
Dr. Christensen graduated from UNLV in 1995 with a Bachelor of Science degree in Biomechanical Kinesiology. During his time in undergraduate study, he also took a two year hiatus from his studies to serve a service mission in the Dominican Republic. He attended dental school at Creighton University and graduated Magna Cum Laude in 2000. While at Creighton he received numerous academic awards and distinctions, including memberships into the prestigious Alpha Omega International Dental Fraternity and Omricon Kappa Upsilon National Dental Honor Society, as well as membership into Alpha Sigma Nu, the National Jesuit Honor Society. He received his MS degree and certificate in Orthodontics from Baylor College of Dentistry in 2002.

AREAS OF INTEREST: SELF LIGATION | EMPOWER

Empower² Self Ligating

Empower is the industry's most complete self ligating bracket system, bringing you choice like you've never had before. This unprecedented array of possibilities inspires you to treat patients your way. Empower puts control back in your hands.

- Unique design options allow you to adapt your treatment philosophies to meet your patients' needs
- Low profile, patient-friendly hooks (optional)
- Empower Clear - Reliable bond strength of proven Quad Matte™ base exclusive to American Orthodontics
- Empower 2 Metal - Micro-etched Maximum Retention™ pad with photo-etched pockets beneath 80 gauge mesh increases mechanical lock and ensures safe, secure bonds



EMPOWER CLEAR

Clear bracket combines performance with patient-pleasing aesthetics

- Durable, aesthetically plated clip
- Individual color coding and Visual Positioning Aids
- Chamfered slot entrances to reduce wire binding
- Reliable bond strength of proven Quad Matte™ base exclusive to AO



EMPOWER 2 METAL

Metal brackets offer fully interactive, fully passive, or combination Dual Activation™ options

- Precision heat treated chromium cobalt clip
- Micro-etched bonding bases for secure bond strength
- Extended tie wings provide easy tie-ability and allow differential tying



EMPOWER 2 MOLAR TUBES

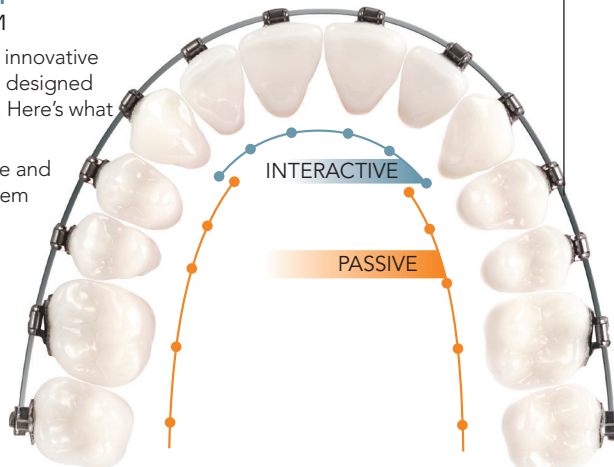
Reconvertible molar tubes provide versatility without compromise

- Multiple design choices - single or double, direct bond or weldable
- Passive clip design for lower ligation and easy wire insertion
- Full slot-width clip delivers exceptional rotation control

Empower SL DUAL Activation™ SYSTEM

The Dual Activation System is a single, innovative concept with multiple applications - all designed to enhance your treatment philosophy. Here's what you'll experience with Dual Activation:

- The best of both worlds - interactive and passive brackets in one unified system
- Excellent anterior control
- Improved posterior freedom play
- Time saving benefits and ease of self ligation

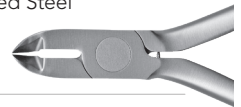


PERIPHERALS

SUSHI PLIERS 001-017403

Ceramic Bracket Debonding

- High quality American Forged Steel
- Contemporary, sleek design
- Patented Two-tone finish



EMPOWER INSTRUMENT 678-901C

Opening Instrument

- Single prong tip for opening using gingival tail of clip
- Double prong tip for opening using facial hole or for pressing wire into bottom of slot during clip closing



MR1 BANDS 505-000/515-000

Maximum Retention Bands

- Photo etched material
- Bright mirror finish
- Reduced interproximal heights



TANZO WIRE

Copper Nickel Titanium Wire

- Polished surface finish
- Preinstalled stops - optional
- High resiliency to deformation
- Quality ensured



TANZO

ELASTOMERICS

Wildlife Elastics

- Top quality latex tubing
- Precision cutting ensures consistent pulling forces
- Latex, Non Latex, and Neon options



DR. CHRISTENSEN'S RECOMMENDED EMPOWER DUAL ACTIVATION PRESCRIPTION



Empower²
Self Ligating

							.022	
Maxillary	Torq	Ang	Rot	M-D	R/L		Interactive	Passive
Central	+12	+5	Empower SL		R L		485-1112 485-2112	
Lateral	+8	+9	Empower SL		R L		485-128 485-228	
Cuspid	0	+8	Empower SL <i>With Hook</i>		R L		485-130B 485-230B	
1st & 2nd Bicuspid	-7	0	Empower SL - Standard Pad <i>With Hook</i>		R L			585-1407B 585-2407B
1st Molar	-18	0	10	ifit Direct Bond Tube Non-Convertible, <i>With Hook</i>	4.5 mm	R L		1957-22-000047HM 1958-22-000048HM
2nd Molar	-28	0	10	ifit Direct Bond Tube Non-Convertible, <i>With Hook</i>	3.2 mm	R L		1951-22-016152HM 1952-22-016153HM
Mandibular								
Anteriors	-6	0	Empower SL		R L		485-4106 485-3106	
Cuspid	+7	+5	Empower SL <i>With Hook</i>		R L		485-437B 485-337B	
1st Bicuspid	-12	+2	Empower SL - Extended Pad <i>With Hook</i>		R L			585-84412B 585-83412B
2nd Bicuspid	-17	+2	Empower SL - Extended Pad <i>With Hook</i>		R L			585-84517B 585-83517B
1st Molar	-25	0	5	ifit Direct Bond Tube Non-Convertible, <i>With Hook</i>	4.5 mm	R L		1955-22-016204HM 1956-22-016205HM
2nd Molar	-25	0	5	ifit Direct Bond Tube Non-Convertible, <i>With Hook</i>	3.2 mm	R L		1953-22-016236HM 1954-22-016237HM



Empower[®]
Clear Self Ligating

						Interactive .022	
Maxillary	Torq	Ang			R/L		Interactive
Central	+12	+5	Empower Clear		R L		1485-22-1112 1485-22-2112
Lateral	+8	+9	Empower Clear		R L		1485-22-128 1485-22-228
Cuspid	0	+8	Empower Clear <i>With Hook</i>		R L		1485-22-130HD 1485-22-230HD
1st Bicuspid	-7	0	Empower Clear <i>With Hook</i>		R L		1485-22-1407HD 1485-22-2407HD
2nd Bicuspid	-7	0	Empower Clear <i>With Hook</i>		R L		1485-22-1407HD 1485-22-2407HD



The Next Generation of Buccal Tubes

American Orthodontics' dedication to innovation has led to the development of ifit - the ultimate combination of functionality, convenience, and patient comfort. ifit features a near horizontal hook orientation, enhanced bond strength and fit, and an ultra low profile.



Innovative hook orientation



Enhanced bonding and fit



Centered funnel entrance



Placement line and positioning guides



Distal Extension on parts with rotation

