



# DR. ED LIN, D.D.S., M.S.

Staying on top of advancing orthodontic technology is critical to a successful practice. Dr. Ed Lin will deliver an insightful lecture focusing on two hot orthodontic topics - 3D orthodontics and self ligation. Specific points on the 3D side will include 3D imaging for superior diagnosis and treatment planning, 3D printing, and in-house aligners. Self ligation topics include clinical efficacy, and efficient wire mechanics.

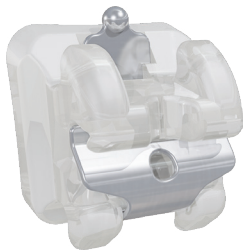
Dr. Ed Lin is one of two partners at Orthodontic Specialists of Green Bay (OSGB) in Green Bay, Wisconsin. He is also one of two partners at Apple Creek Orthodontics of Appleton (ACO). Dr. Lin received both his dental (DDS) and orthodontic (MS) degrees from Northwestern University Dental School. Dr. Lin is an internationally recognized speaker (US, Canada, Puerto Rico, Australia, and China), has written several articles that have been published in a wide variety of dental journals, and has lectured at several orthodontic residency programs across the United States.

**AREAS OF INTEREST: SELF LIGATION | 3D ORTHODONTICS**

## Empower<sup>2</sup> Self Ligation

Empower is the industry's most complete self ligating bracket system, bringing you choice like you've never had before. This unprecedented array of possibilities inspires you to treat patients your way. Empower puts control back in your hands.

- Unique design options allow you to adapt your treatment philosophies to meet your patients' needs
- Low profile, patient-friendly hooks (optional)
- Empower Clear - Reliable bond strength of proven Quad Matte™ base exclusive to American Orthodontics
- Empower SL - Maximum Retention pad with photo-etched pockets beneath 80 gauge mesh to increase pad surface area and ensure safe, secure bonds

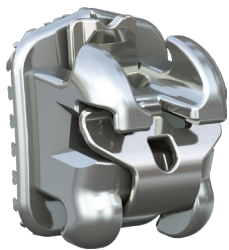


## Empower<sup>®</sup> Clear Self Ligating

### EMPOWER CLEAR

Clear bracket combines performance with patient-pleasing aesthetics

- Durable, aesthetically plated clip
- Individual color coding and Visual Positioning Aids
- Chamfered slot entrances to reduce wire binding
- Reliable bond strength of proven Quad Matte™ base exclusive to AO



## Empower<sup>2</sup> Self Ligation

### EMPOWER 2 METAL

Metal brackets offer fully interactive, fully passive, or combination Dual Activation™ options

- Precision heat treated chromium cobalt clip
- Micro-etched bonding bases for secure bond strength
- Extended tie wings provide easy tie-ability and allow differential tying



## Empower<sup>2</sup> Reconvertible SL Molars

### EMPOWER 2 MOLAR TUBES

Reconvertible molar tubes provide versatility without compromise

- Multiple design choices - single or double, direct bond or weldable
- Passive clip design for lower ligation and easy wire insertion
- Full slot-width clip delivers exceptional rotation control

## PERIPHERALS

### SUSHI PLIERS 001-017403

Ceramic Bracket Debonding

- High quality American Forged Steel
- Contemporary, sleek design
- Patented Two-tone finish



### EMPOWER INSTRUMENT 678-901C

Opening Instrument

- Single prong tip for opening using gingival tail of clip
- Double prong tip for opening using facial hole or for pressing wire into bottom of slot during clip closing



### MR1 BANDS 505-000/515-000

Maximum Retention Bands

- Photo etched material
- Bright mirror finish
- Reduced interproximal heights



### TANZO WIRE

Copper Nickel Titanium Wire

- Polished surface finish
- Preinstalled stops - optional
- High resiliency to deformation
- Quality ensured



TANZO

### ELASTOMERICS

Wildlife Elastics

- Top quality latex tubing
- Precision cutting ensures consistent pulling forces
- Latex, Non Latex, and Neon options



# DR. LIN'S RECOMMENDED EMPOWER PRESCRIPTION



**Empower<sup>2</sup>**  
Self Ligating

|                   |      |     |     |  |        |        | .018                             |
|-------------------|------|-----|-----|--|--------|--------|----------------------------------|
| Maxillary         | Torq | Ang | Rot |  | M-D    | R/L    | INTERACTIVE                      |
| Central           | +17  | +4  |     | Empower SL                                       |        | R<br>L | 475-1117<br>475-2117             |
| Lateral           | +10  | +8  |     | Empower SL                                       |        | R<br>L | 475-1210<br>475-2210             |
| Cuspid            | 0    | +8  |     | Empower SL<br>With Hook                          |        | R<br>L | 475-130B<br>475-230B             |
| 1st Bicuspid      | -7   | 0   |     | Empower SL - True Offset Pad<br>With Hook        |        | R<br>L | 475-71407B<br>475-72407B         |
| 2nd Bicuspid      | -7   | 0   |     | Empower SL - True Offset Pad<br>With Hook        |        | R<br>L | 475-71407B<br>475-72407B         |
| 1st Molar         | -14  | -10 | 10  | Empower SL Tube<br>With Hook and .018 aux tube   | 3.5 mm | R<br>L | 9612-18-1614HM<br>9622-18-2614HM |
| 2nd Molar         | -10  |     | 5   | LP Direct Bond<br>Non Convertible With Hook      | 3.2 mm | R<br>L | 951-3004C<br>952-3005C           |
| <b>Mandibular</b> |      |     |     |  |        |        |                                  |
| Anteriors         | -6   | 0   |     | Empower SL                                       |        | R<br>L | 475-4106<br>475-3106             |
| Cuspid            | -6   | +3  |     | Empower SL<br>With Hook                          |        | R<br>L | 475-4306B<br>475-3360B           |
| 1st Bicuspid      | -12  | +2  |     | Empower SL - True Offset Pad<br>With Hook        |        | R<br>L | 475-74412B<br>475-73412B         |
| 2nd Bicuspid      | -17  | +2  |     | Empower SL - True Offset Pad<br>With Hook        |        | R<br>L | 475-74517B<br>475-73517B         |
| 1st Molar         | -20  | 20  | 0   | Empower SL Tube<br>With Hook and .018 aux tube   | 3.5 mm | R<br>L | 9632-18-4620HM<br>9642-18-3620HM |
| 2nd Molar         | -25  |     | 5   | LP Direct Bond Tube<br>Non Convertible With Hook | 3.2 mm | R<br>L | 953-3012C<br>954-3013C           |



**Empower<sup>®</sup>**  
Clear Self Ligating

|                   |      |     |  |                            |  |        | .018                             |
|-------------------|------|-----|--|----------------------------|--|--------|----------------------------------|
| Maxillary         | Torq | Ang |  |                            |  | R/L    | INTERACTIVE                      |
| Central           | +17  | +4  |  | Empower Clear              |  | R<br>L | 1475-18-1117<br>1475-18-2117     |
| Lateral           | +10  | +8  |  | Empower Clear              |  | R<br>L | 1475-18-1210<br>1475-18-2210     |
| Cuspid            | 0    | +8  |  | Empower Clear<br>With Hook |  | R<br>L | 1475-18-130HD<br>1475-18-230HD   |
| 1st Bicuspid      | -7   | 0   |  | Empower Clear<br>With Hook |  | R<br>L | 1475-18-1407HD<br>1475-18-2407HD |
| 2nd Bicuspid      | -7   | 0   |  | Empower Clear<br>With Hook |  | R<br>L | 1475-18-1407HD<br>1475-18-2407HD |
| <b>Mandibular</b> |      |     |  |                            |  |        |                                  |
| Anteriors         | -6   | 0   |  | Empower Clear              |  | R<br>L | 1475-18-4106<br>1475-18-3106     |
| Cuspid            | 0    | +3  |  | Empower Clear<br>With Hook |  | R<br>L | 1475-18-430HD<br>1475-18-330HD   |

**LP**



## LP<sup>®</sup> Buccal Tubes

LP Buccal Tubes are reduced in size by 25% versus standard sized tubes. LP tubes feature smooth contours for patient comfort, a funneled mesial opening for easy wire insertion, and occlusal/gingival positioning guides designed to make bonding easier at the posterior.

**AO AMERICAN**  
ORTHODONTICS

3524 Washington Avenue • Sheboygan, WI USA 53081 • +1 920 457 5051 • www.americanortho.com

LITSPKR-025450 JUN 2019