

GUIDO SAMPERMANS, D.M.D., M.S.

Dr. Guido Sampermans graduated in 1980 as a general dentist from the University of Leuven, Belgium. In 1986 he started his private orthodontic office in Belgium and in 1997 in Heinsberg, Germany. From 2003 to 2010 he led an orthodontic office in Maastricht, the Netherlands. In 2010 he opened a brand new orthodontic office in Echt, the Netherlands. This office is considered a state of the art orthodontic office, including progressive concepts about service and efficiency using the latest digital developments.

Dr. Sampermans is an affiliate member of the Angle Society in Southern California (USA) and has taught orthodontic treatment philosophy and orthodontic practice management both inside and outside of Europe for 15 years. He also offers micro-seminars in his office on self-ligating brackets, indirect bonding, computer related 3D technology, and modern practice management. Since 2003, he has been a speaker at 30 orthodontic congresses. He has first-class knowledge and extensive experiences with pre-adjusted appliance systems (Andrews, Roth, MBT, Roncone). He has worked with active self-ligating bracket systems since 2003, finishing over 5000 cases with this system.

AREAS OF INTEREST: EMPOWER | SELF LIGATION | PRACTICE MANAGEMENT

Empower² Self Ligating

Empower is the industry's most complete self ligating bracket system, bringing you choice like you've never had before. This unprecedented array of possibilities inspires you to treat patients your way. Empower puts control back in your hands.

- Unique design options allow you to adapt your treatment philosophies to meet your patients' needs
- Low profile, patient-friendly hooks (optional)
- Empower Clear - Reliable bond strength of proven Quad Matte™ base exclusive to American Orthodontics
- Empower 2 Metal - Micro-etched Maximum Retention™ pad with photo-etched pockets beneath 80 gauge mesh increases mechanical lock and ensures safe, secure bonds



EMPOWER 2 CLEAR

Clear bracket combines performance with patient-pleasing aesthetics

- Reliable bond strength of proven Quad Matte™ base exclusive to AO
- Durable, aesthetically plated clip
- Individual color coding and Visual Positioning Aids
- Chamfered slot entrances to reduce wire binding



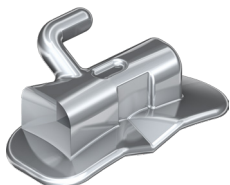
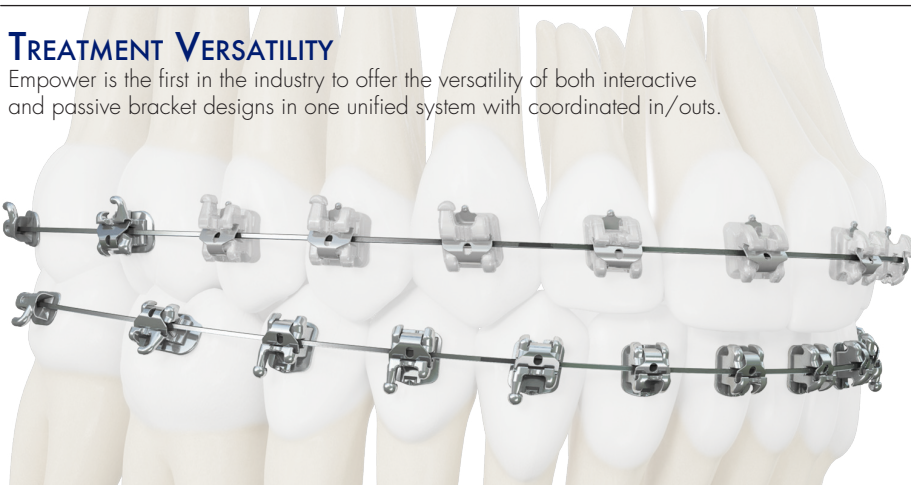
EMPOWER 2 METAL

Metal brackets offer fully interactive, fully passive, or combination Dual Activation™ options

- Precision heat treated chromium cobalt clip
- Micro-etched bonding bases for secure bond strength
- Extended tie wings provide easy tie-ability and allow differential tying

TREATMENT VERSATILITY

Empower is the first in the industry to offer the versatility of both interactive and passive bracket designs in one unified system with coordinated in/outs.



LP

LP Low Profile Tubes

Low Profile buccal tubes have a 25% lower profile than standard sized tubes. LP tubes feature smooth contours for patient comfort, a funneled mesial opening for easy wire insertion, and occlusal/gingival positioning guides designed to make delivery to the molars easier.

PERIPHERALS

EMPOWER INSTRUMENT 678-901C

Opening Instrument

- Single prong tip for opening using gingival tail of clip
- Double prong tip for opening using facial hole or for pressing wire into bottom of slot during clip closing



POWERSCOPE 2 CLASS II CORRECTOR 852-016538 5 PATIENT KIT

- One size fits all
- Internal NiTi Spring Mechanism
- Connects wire-to-wire using a magnetic driver for quick install



ELASTOMERICS

Wildlife Elastics

- Top quality latex tubing
- Precision cutting ensures consistent pulling forces
- Latex, Latex Free, and Neon options



DR. SAMPERMANS' RECOMMENDED PRESCRIPTION

Empower² Clear Self Ligating Empower² Metal Self Ligating

Brackets 5-5

Maxillary	Torq	Ang	Rot	Empower SL	R/L	Clear Brackets	Metal Brackets
						Interactive .022	Interactive .022
Central	+17	+4	0	Empower SL	R	1485-22-1117	485-1117
					L	1485-22-2117	485-2117
Lateral	+10	+8	0	Empower SL	R	1485-22-1210	485-1210
					L	1485-22-2210	485-2210
Cuspid	0	+8	0	Empower SL With Hook	R	1485-22-130HD	485-130B
					L	1485-22-230HD	485-230B
1st & 2nd Premolars	-12	+2	0	Empower SL - Extended Pad on metal	R	1485-22-1412	485-81412
					L	1485-22-2412	485-82412
Mandibular							
Anteriors	-1	0	0	Empower SL	R	1485-22-4101	485-4101
					L	1485-22-3101	485-3101
Cuspid	-2	+9	0	Empower SL With Hook	R	1485-22-4302HD	485-4302B
					L	1485-22-3302HD	485-3302B
1st Premolar	-7	0	0	Empower SL - Extended Pad on metal With Hook	R	1485-22-4407HD	485-84407B
					L	1485-22-3407HD	485-83407B
2nd Premolar	-12	+2	0	Empower SL - Extended Pad on metal With Hook	R	1485-22-4512HD	485-84512B
					L	1485-22-3512HD	485-83512B

Bands and Tubes

Tube	Tooth	Torq	Ang	Rot		M-D	R/L	.022
Tube	1.6	-18	0	10	LP Direct Bond, Single Non-Convertible, With Hook	4.5 mm	R	957-1070C
	2.6					L	958-1071C	
Tube	1.7	-14	0	10	LP Direct Bond, Single Non-Convertible, With Hook	3.2 mm	R	951-2027C
	2.7					L	952-2028C	
Tube	1.7	-14	0	0	Direct Bond Tube, Single Non-Convertible, Wraparound, With Hook	2.0 mm	R	097-764C
	2.7					L	097-765C	
Tube	4.6	-14	0	0	LP Direct Bond, Single Non-Convertible Tube, With Hook	4.5 mm	R	955-725CR
	3.6					L	956-725CL	
Tube	4.7	-14	0	0	LP Direct Bond, Single Non-Convertible, With Hook	3.2 mm	R	953-811C
	3.7					L	954-810C	
Band Upper 1st Molar		-18	0	14	MRX Band - Convertible Triple Tube, With Hook	4.2 mm	R	320-890C
						L	320-891C	
Lingual Attachment		0	0	7	Lingual Sheath - 036 Slotted, With Ball Hook		R	852-146AR
							L	852-146AL
Band Lower 1st Molar		-14	0	0	MRX Band Convertible Double Tube, With Hook	4.2 mm	R	330-674C
						L	330-675C	
Lingual Attachment					Lingual Cleat, Gull Wing		R/L	852-165

Arch Wires

For all part numbers ending in W, wires are individually packaged in sterilizable pouches.

WIRE SIZE	UPPER/LOWER	WIRE TYPE	FORM	QUANTITY	NOTES	PART NUMBER
.013	Upper/Lower	Tanzo Mid Force	VLP	10	Pre-loaded Stops	827-VX-13PSW
.014	Upper/Lower	Tanzo Mid Force	VLP	10	Pre-loaded Stops	827-VX-14PSW
.016	Upper/Lower	Tanzo Mid Force	VLP	10	Pre-loaded Stops	827-VX-16PSW
.018	Upper/Lower	Tanzo Mid Force	VLP	10	Pre-loaded Stops	827-VX-18PSW
.019 X .025	Upper	TriTitanium	Form III	10		859-736IW
.019 X .025	Lower	TriTitanium	Form III	10		859-746IW
.020 X .020	Upper	TriTitanium	Form III	10		859-737IW
.020 X .020	Lower	TriTitanium	Form III	10		859-747IW
.019 X .025	Upper	Beta Titanium	Form III	10		857-674IW
.019 X .025	Lower	Beta Titanium	Form III	10		857-684IW
.016 X .022	Upper/Lower	SS Streight Woven	Form I	10	8-Strand Braided	857-902
.019 X .025	Upper/Lower	SS Streight Woven	Form I	10	8-Strand Braided	857-905
.021 X .025	Upper/Lower	SS Streight Woven	Form I	10	8-Strand Braided	857-907
.018	Upper	Stainless Steel	Form III	50		853-338IW
.018	Lower	Stainless Steel	Form III	50		853-348IW
.020	Upper	Stainless Steel	Form III	50		853-340IW
.020	Lower	Stainless Steel	Form III	50		853-350IW
.018 X .018	Upper	Stainless Steel	Form III	10		853-374IW
.018 X .018	Lower	Stainless Steel	Form III	10		853-384IW
.020 X .020	Upper	Stainless Steel	Form III	10		853-3U-2020W
.020 X .020	Lower	Stainless Steel	Form III	10		853-3L-2020W
.019 X .025	Upper	Stainless Steel	Form III	10		853-376IW
.019 X .025	Lower	Stainless Steel	Form III	10		853-386IW